

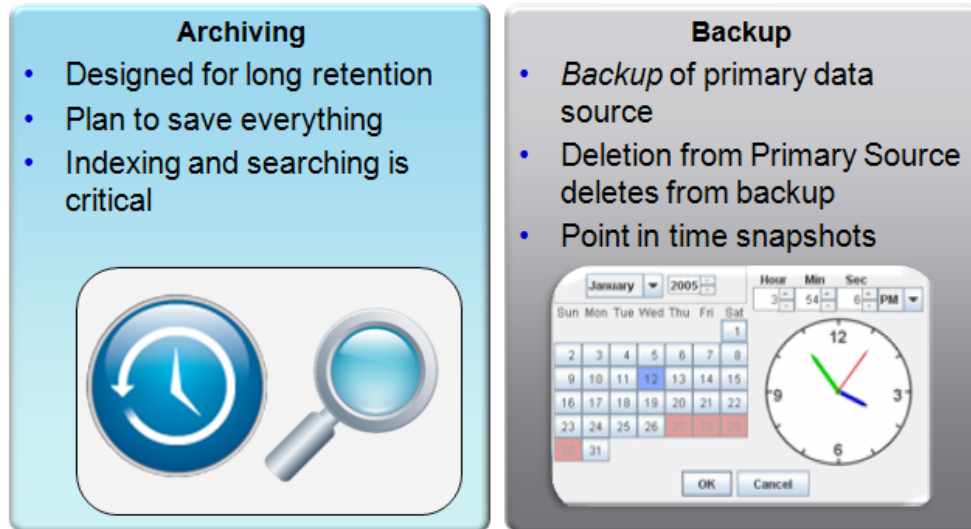
Email Backup and Archiving - Differences and Explanations

Solutions Guide

This document provides a summary of the three types of email storage solutions available using Barracuda Networks products and the different challenges each solution addresses.

Differences between Archiving and Backup

At a high level, archiving is designed to save all data for an extended period of time and index it for easy search and retrieval. Conversely, backup is designed to restore and index a snapshot of data at a certain point in time.



There are two Barracuda Networks products that address email storage and management problems.

1. **Barracuda Message Archiver**
2. **Barracuda Backup Service**

The Barracuda Message Archiver archives email for compliance and legal purposes and can help with optimizing storage on the email server. The Barracuda Backup Service focuses on protecting the customer from operational failure, disk failures, and disasters.

Different Products to Address Different Challenges

1. Email Archiving with Barracuda Message Archiver

The core functionality of the Barracuda Message Archiver is to index and preserve all emails in order to enforce message content and retention policies for regulatory compliance. All emails sent are captured and stored by the Barracuda Message Archiver so that they can be retrieved and reproduced as electronic evidence as part of a legal discovery process.

The Barracuda Message Archiver also helps in reducing the storage requirements of your email server. For example, emails can be offloaded to the Barracuda Message Archiver, which significantly reduces storage costs and improves email server performance. Furthermore, there is a client plugin that enables seamless access to archived emails for end users.

Key Features:

- ALL emails are archived, indexed, and preserved in a tamper proof archive
- Messages for litigation can be searched and reproduced
- Auditor interface available with compliance oriented features
- Email server performance improved by offloading emails

2. Email Server Backup with Barracuda Backup Service

The Barracuda Backup Service provides a complete backup of the email server for disaster recovery. The combination of software, configuration, and email data is needed to restore an organization's email server should the server be corrupted or destroyed. This can only be done if a full backup of the email server software and email database is available. The Barracuda Backup Service with BarracudaWare agents provides the capability to do a full backup of Microsoft Exchange Server. Novell GroupWise email servers can also be completely backed up using the Novell dbcopy backup software included with GroupWise.

Key Features:

- Restoration of an email server
- Reliable back up of entire email server including software, configuration, and database
- Minimizes downtime and restores email services quickly

3. Email Message-level Backup with Barracuda Backup Service

Message-level backup of email stores every email message from each user for fast restoration. This allows administrators or users to access messages that were accidentally deleted or corrupted in a single email account. Individual email messages, entire folders of emails, or all of the emails for a specific user can be restored to the email server without having to restore the entire server. The restored emails can be sent directly back to their original location in the user's mailbox or to an alternate location.

Key Features:

- Records folders and locations of emails from the server
- Restores email at a user level without restoring the entire email server
- Quick restoration of a small amount of email messages
- Locates individual messages to restore easily